

Cutting EdgeVantage™

ISSUE 001

INSIDE THIS ISSUE:

ALPHA GRAINGER MANUFACTURING

A Look Inside One of the Northeast's Top Job Shops (See pg. 2)

JAKE GRAINGER

Embracing the Mindset of a 'Chief Technology Officer' (See pg. 12)

GREAT PROMOTIONAL BUYS INSIDE!



INTRODUCTION

Thanks for checking out our first issue of Cutting EdgeVantage™. Every quarter, we'll be highlighting the work—and the products used to do that work—of some of the best companies within the machining and manufacturing worlds.

This issue features an inside look at **Alpha Grainger Manufacturing.**

From its headquarters in Franklin Mass., Alpha Grainger has spent the last 45 years helping customers solve the most complex machining challenges that come along with producing world-class products. Founded by brothers Jake and Gary Grainger in 1973, the operation has withstood the test of time due to an unwavering commitment to innovation and leveraging of emerging technologies. From cutting-edge machinery to its production accessories, Jake and Gary believe that quality must go in if quality is to come out.

Flip through the rest of this issue for an inside look at the products, and some of the people who help Alpha Grainger churn out more than 150 million parts each year for shipment all over the globe.

Browse the categories below for info and special offers:

4-5 CUTTING TOOLS	14-15 FLUIDS	20 SHRINK-FIT
6-7 WORKHOLDING	16 PRESETTERS	21 PURCHASE DETAILS
8-9 INSERTS	17 MAGNIFICATION	22-23 PURCHASE DETAILS
10-11 MEASUREMENTS	18 FLUIDS	
12-13 THE CTO	19 TOOL STORAGE	

HIGH QUALITY CUTTING TOOLS

Spend more time optimizing part design and less time worrying about the tools you need to get the job done.

Alpha Grainger trusts M.A. Ford to provide tools that optimize material removal rate and reduce production times on its most complex parts.

**BUY 3
MICRO TOOLS
GET 1
MICRO TOOL
FREE**

Up to 33% savings

See page 21 for details.

Take advantage of a rare offer from M.A. Ford® to get a free micro tool when you purchase three.

For almost 100 years, M.A. Ford has set the standard for precision tooling in aerospace, firearms, medical, automotive, and power generation.

FEATURED OFFER



Has your workholding
technology kept up
with the evolution
of the rest of the
technology on your
shop floor?

If not, you could be sacrificing
efficiency and ultimately, profits.

FEATURED OFFER

**When you get a Ball Lock® product, you know
it's going to increase your day-to-day production.**

Take advantage of this offer from Jergens,
today and save.



BUY ONE SUBPLATE,
GET 4 SHANKS FREE

Up to a \$350 value

See page 23 for details.

Jergens

FINEST QUALITY INSERTS

If you're not optimizing your parting-off and grooving applications with the latest technology, featuring through coolant capability, you're missing the boat on a key area of optimization.

The higher quality precision inserts from ARNO USA can provide a greater level of reliability, stability and performance in the overall quality of your machined parts.

MAXIMIZE PRODUCTIVITY TODAY

Receive a recommendation on which ARNO products are best for your application.

Contact your distributor sales representative for details.

00046 00

TUR3: 0708 END MILL

wear offset

Mag PL

		tool name
1	1	.118 ARNO CUT OFF
1	3	.016 RAD 55 DEG INSERT
1	4	.4375 PILOT DRILL 5XD
1	5	.4375 DRILL 12XD
1	6	.4375 FLAT BOTTOM INSERT
1	7	.1875 COOLANT FLUSH
1	8	.185 PILOT DRILL
1	9	.185 DRILL 25XD
1	10	STEP DRILL 1841X 8XD
1	11	.004 RAD INSERT BORINGBAR
1	12	.004 RAD INSERT BORINGBAR
1	13	.125 ENDMILL 4 FLUTE
1	14	.375 BALL MILL 2 FLUTE

overstore

single process

FEATURED OFFER

Parting-off & Grooving Systems

Available with & without ACS through coolant system:

- Monoblocks
- Modular Holders
- Blade Flange Mounted System



30% DISCOUNT
on all SA steel holders.

See page 22 for details.



FEATURED OFFER



Give INSIZE a try

Across-the-board savings make it
an easy switch!

SAVE UP TO 33%

on all qualifying INSIZE measuring tools

See page 22 for details.

Measuring tools
need to perform —
no questions asked.
If you're not using
Insize, switch to a
brand you'll never
second guess.

Known for Quality,
Innovation, Service, Value
...at a fraction of the cost!



From its founding in 1973, **Jake Grainger** has run the show at **Alpha Grainger**. Now more than ever, he embraces his role as Chief Technology Officer as the business and the industry continue to evolve.

Every year, Alpha Grainger Manufacturing invests millions of dollars in new technology. New machines, new capabilities, new processes and the training for its employees to capitalize on these investments. For Jake Grainger, it all boils down to the pursuit of speed. He craves efficiency and he's extremely proud of the technological legacy the company has built over the last 45 years. "I look at where the industry has come since we started here in 1973 and it's amazing what we're now able to machine here at our facility. Technology has helped us compete and I firmly believe it's what will keep us competitive for years to come," Grainger explains. "Complex parts are what customers need help with and we've always fought to stay at the forefront of producing them. It's what customers know us for and it's why we're still a valuable partner for them today."

His employees have noticed, too. "It's been so great to come to the Alpha Grainger environment, where they make the investment in all the

technology you could ever need to produce parts for all the most competitive companies," says Mike Esposito, who's been with the company for a few years. "Every department is empowered by management to utilize the latest machining related technology from plunge and wire EDM, to metrology and in-house tool manufacturing. Everyone on the floor is unified behind minimizing cycle times. It's awesome. Anything

we need, Jake is always willing to listen. The whole organization does."

At 70 years old, Jake Grainger shows no signs of slowing down. "We put 2,300 solar panels on our roof to help pay for our power output. We've invested in government-grade data security. And, we have continued to invest in training our people to understand how everything works together. Business moves faster every day, and we couldn't be more excited about everything we're doing to stay ahead of the curve!"



T-SHIRT GIVEAWAY
See back cover for details.



HIGH QUALITY FLUIDS

Pound for pound
your facility may use
as much coolant
as any other
product you buy.

Do you need to reconsider
your coolant provider to
ensure you're getting the
most performance
for your dollar?

FEATURED OFFER

Trust Rustlick to deliver
the performance you need—and get
a free drum mixer while you're at it.



FREE DRUM MIXER
when you buy a 55 gallon drum of RUSTLIK

Up to a \$159 value

See page 23 for details.

BUY 11 CANS
GET 1 CAN FREE

See page 23 for details.



BUY 1 APPLICATOR
GET 1 GALLON FREE

See page 23 for details.

Accu-Lube

SCRUBS



DYKEM

Rustlick™

TOP-OF-THE-LINE PRESETTER

FEATURED OFFER

A top-of-the-line presetter is a relatively small investment that **can pay huge dividends on your bottom line.**



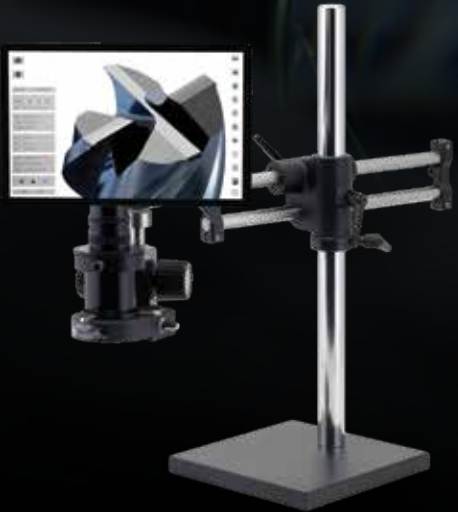
1 FREE ADAPTER
with the purchase of
an EZSET presetter.
Up to a \$1,200 value
See page 22 for details.



MAGNIFICATION

FEATURED OFFER

**Look to O.C. White for
top performing innovations
in magnification.**
Quality control has never been
more important, and magnification
and lighting play a huge part in
being able to do QC right.



FREE 2X LENS
with purchase of a
SUPER-SCOPE® product
A \$349 value
See page 22 for details.



HIGH QUALITY FLUIDS

FEATURED OFFER

ICC & Zurnoil manufacture the metalworking chemistry you need to keep your operations **leaner, faster, more efficient and more profitable!**

- Drawing & Stamping Lubricants
- Machine & Grinding Coolants
- Spray & Immersion Cleaners
- Rust & Corrosion Preventatives
- Machine Maintenance Lubricants
- Custom Formulations

**FREE
EVALUATION
& SAMPLES**

Schedule an on-site operational evaluation today.

Contact your distributor sales representative for details.



TOOL STORAGE

FEATURED OFFER

The Kennedy Maintenance Pro line is the safest, most heavy duty tool chest on the market.

Durability comes standard: 360 degree mobility, center wheel stability, 5 colors available

**SEE THE
2018 LINEUP**

See page 22 for details.



KENNEDY American-made quality for more than 100 years.

PRECISION SHRINK-FIT

FEATURED OFFER

Bilz ThermoGrip® shrink-fit system saves time,
preserves tool life and ensures
the highest levels of precision in
tight-tolerance applications.

10 FREE HOLDERS

With the purchase of a
3410WK Shrink Fit Machine.


A \$2,500 Value
See page 22 for details.



BILZ

Cutting EdgeVantage™

Featured Offers
Offers Valid Through June 30th, 2018
Contact your local distributors sales representative to order

<div></div>					
OFFER: BUY 3 GET 1 FREE, ALL SAME SIZE					
PRODUCT NO.	DESCRIPTION	PRODUCT NO.	DESCRIPTION	PRODUCT NO.	DESCRIPTION
MXDSRM0050A	0.50mm x 4mm Altima Drill	11606250R.005	16197 1/16 R.005 3 FI Endmill	16906250R.005A	16974 1/16 R.005 Altin Endmill
MXDSRM0055A	0.55mm x 4mm Altima Drill	11606250R.005A	16204 1/16 R.005 Altin Endmill	16906250R.005F	16997 1/16 R.005 Fordlube Mill
MXDSRM0060A	0.60mm x 5mm Altima Drill	11606250R.005F	16210 1/16 R.005 Fordlube Mill	16906250R.010	16910 1/16 R.010 3 FI Endmill
MXDSRM0065A	0.65mm x 5mm Altima Drill	11606250R.010	16102 1/16 R.010 3 FI Endmill	16906250R.010A	16942 1/16 R.010 Altin Endmill
MXDSRM0070A	0.70mm x 5mm Altima Drill	11606250R.010A	16150 1/16 R.010 Altin Endmill	16906250R.010F	16998 1/16 R.010 Fordlube Mill
MXDSRM0075A	0.75mm x 6mm Altima Drill	11606250R.010F	16212 1/16 R.010 Fordlube Mill	16906250R.015	16912 1/16 R.015 3 FI Endmill
MXDSRM0080A	0.80mm x 6mm Altima Drill	11606250R.015	16104 1/16 R.015 3 FI Endmill	16906250R.015A	16944 1/16 R.015 Altin Endmill
MXDSRM0085A	0.85mm x 7mm Altima Drill	11606250R.015A	16128 1/16 R.015 Altin Endmill	16906250R.015F	16999 1/16 R.015 Fordlube Mill
MXDSRM0090A	0.90mm x 7mm Altima Drill	11606250R.015F	16214 1/16 R.015 Fordlube Mill	16906250R.020	16914 1/16 R.020 3 FI Endmill
MXDSRM0095A	0.95mm x 7mm Altima Drill	11606250R.020	16106 1/16 R.020 3 FI Endmill	16906250R.020A	16946 1/16 R.020 Altin Endmill
MXDSRM0100A	1.00mm x 8mm Altima Drill	11606250R.020A	16130 1/16 R.020 Altin Endmill	16906250R.020F	17000 1/16 R.020 Fordlube Mill
MXDSRM0105A	1.05mm x 8mm Altima Drill	11606250R.020F	16216 1/16 R.020 Fordlube Mill	16907810R.005	16968 5/64 R.005 3 FI Endmill
MXDSRM0110A	1.10mm x 8mm Altima Drill	11607810R.005	16198 5/64 R.005 3 FI Endmill	16907810R.005A	16976 5/64 R.005 Altin Endmill
MXDSRM0115A	1.15mm x 9mm Altima Drill	11607810R.005A	16206 5/64 R.005 Altin Endmill	16907810R.005F	17001 5/64 R.005 Fordlube Mill
MXDSRM0120A	1.20mm x 9mm Altima Drill	11607810R.005F	16218 1/16 R.005 Fordlube Mill	16907810R.010	16916 5/64 R.010 3 FI Endmill
MXDSRM0125A	1.25mm x 9mm Altima Drill	11607810R.010	16108 5/64 R.010 3 FI Endmill	16907810R.010A	16948 5/64 R.010 Altin Endmill
MXDSRM0130A	1.30mm x 10mm Altima Drill	11607810R.010A	16132 5/64 R.010 Altin Endmill	16907810R.010F	17002 5/64 R.010 Fordlube Mill
MXDSRM0135A	1.35mm x 10mm Altima Drill	11607810R.010F	16220 1/16 R.010 Fordlube Mill	16907810R.015	16918 5/64 R.015 3 FI Endmill
MXDSRM0140A	1.40mm x 10mm Altima Drill	11607810R.015	16110 5/64 R.015 3 FI Endmill	16907810R.015A	16950 5/64 R.015 Altin Endmill
MXDSRM0145A	1.45mm x 11mm Altima Drill	11607810R.015A	16134 5/64 R.015 Altin Endmill	16907810R.015F	17003 5/64 R.015 Fordlube Mill
MXDSRM0150A	1.50mm x 11mm Altima Drill	11607810R.015F	16222 1/16 R.015 Fordlube Mill	16907810R.020	16920 5/64 R.020 3 FI Endmill
MXDSRM0155A	1.55mm x 12mm Altima Drill	11607810R.020	16112 5/64 R.020 3 FI Endmill	16907810R.020A	16952 5/64 R.020 Altin Endmill
MXDSRM0160A	1.60mm x 12mm Altima Drill	11607810R.020A	16136 5/64 R.020 Altin Endmill	16907810R.020F	17004 5/64 R.020 Fordlube Mill
MXDSRM0165A	1.65mm x 12mm Altima Drill	11607810R.020F	16224 1/16 R.020 Fordlube Mill	16909370R.005	16970 3/32 R.005 3 FI Endmill
MXDSRM0170A	1.70mm x 13mm Altima Drill	11609370R.005	16199 3/32 R.005 3 FI Endmill	16909370R.005A	16995 3/32 R.005 Altin Endmill
MXDSRM0175A	1.75mm x 13mm Altima Drill	11609370R.005A	16208 3/32 R.005 Altin Endmill	16909370R.005F	17005 3/32 R.005 Fordlube Mill
MXDSRM0180A	1.80mm x 13mm Altima Drill	11609370R.005F	16227 3/32 R.005 Fordlube Mill	16909370R.010	16922 3/32 R.010 3 FI Endmill
MXDSRM0185A	1.85mm x 14mm Altima Drill	11609370R.010	16114 3/32 R.010 3 FI Endmill	16909370R.010A	16954 3/32 R.010 Altin Endmill
MXDSRM0190A	1.90mm x 14mm Altima Drill	11609370R.010A	16138 3/32 R.010 Altin Endmill	16909370R.010F	17006 3/32 R.010 Fordlube Mill
MXDSRM0195A	1.95mm x 14mm Altima Drill	11609370R.010F	16228 3/32 R.010 Fordlube Mill	16909370R.015	16924 3/32 R.015 3 FI Endmill
MXDSRM0200A	2.00mm x 15mm Altima Drill	11609370R.015	16116 3/32 R.015 3 FI Endmill	16909370R.015A	16956 3/32 R.015 Altin Endmill
MXDSRM0205A	2.05mm x 15mm Altima Drill	11609370R.015A	16140 3/32 R.015 Altin Endmill	16909370R.015F	17007 3/32 R.015 Fordlube Mill
MXDSRM0210A	2.10mm x 15mm Altima Drill	11609370R.015F	16230 3/32 R.015 Fordlube Mill	16909370R.020	16928 3/32 R.020 3 FI Endmill
MXDSRM0215A	2.15mm x 16mm Altima Drill	11609370R.020	16118 3/32 R.020 3 FI Endmill	16909370R.020A	16958 3/32 R.020 Altin Endmill
MXDSRM0220A	2.20mm x 16mm Altima Drill	11609370R.020A	16142 3/32 R.020 Altin Endmill	16909370R.020F	17008 3/32 R.020 Fordlube Mill
MXDSRM0225A	2.25mm x 17mm Altima Drill	11609370R.020F	16232 3/32 R.020 Fordlube Mill	16912500R.005	16972 1/8 R.005 3 FI Endmill
MXDSRM0230A	2.30mm x 17mm Altima Drill	11612500R.005	16202 1/8 R.005 3 FI Endmill	16912500R.005A	16996 1/8 R.005 Altin Endmill
MXDSRM0235A	2.35mm x 17mm Altima Drill	11612500R.005A	16242 1/8 R.005 Altin Endmill	16912500R.005F	17009 1/8 R.005 Fordlube Mill
MXDSRM0240A	2.40mm x 18mm Altima Drill	11612500R.005F	16234 1/8 R.005 Fordlube Mill	16912500R.010	16932 1/8 R.010 3 FI Endmill
MXDSRM0245A	2.45mm x 18mm Altima Drill	11612500R.010	16120 1/8 R.010 3 FI Endmill	16912500R.010A	16960 1/8 R.010 Altin Endmill
MXDSRM0250A	2.50mm x 18mm Altima Drill	11612500R.010A	16144 1/8 R.010 Altin Endmill	16912500R.010F	17010 1/8 R.010 Fordlube Mill
MXDSRM0255A	2.55mm x 19mm Altima Drill	11612500R.010F	16238 1/8 R.010 Fordlube Mill	16912500R.015	16934 1/8 R.015 3 FI Endmill
MXDSRM0260A	2.60mm x 19mm Altima Drill	11612500R.015	16122 1/8 R.015 3 FI Endmill	16912500R.015A	16962 1/8 R.015 Altin Endmill
MXDSRM0265A	2.65mm x 19mm Altima Drill	11612500R.015A	16146 1/8 R.015 Altin Endmill	16912500R.015F	17011 1/8 R.015 Fordlube Mill
MXDSRM0270A	2.70mm x 20mm Altima Drill	11612500R.015F	16239 1/8 R.015 Fordlube Mill	16912500R.020	16938 1/8 R.020 3 FI Endmill
MXDSRM0275A	2.75mm x 20mm Altima Drill	11612500R.020	16124 1/8 R.020 3 FI Endmill	16912500R.020A	16964 1/8 R.020 Altin Endmill
MXDSRM0280A	2.80mm x 20mm Altima Drill	11612500R.020A	16148 1/8 R.020 Altin Endmill	16912500R.020F	17012 1/8 R.020 Fordlube Mill
MXDSRM0285A	2.85mm x 21mm Altima Drill	11612500R.020F	16240 1/8 R.020 Fordlube Mill		
MXDSRM0295A	2.95mm x 22mm Altima Drill	16906250R.005	16966 1/16 R.005 3 FI Endmill		

All Freight FOB shipping point

Cutting EdgeVantage™

TOOL-KRIB SUPPLY COMPANY

WWW.TOOLKRIB.COM

787 Passaic Avenue
West Caldwell, NJ 07006

P: (973) 808-4550 F: (973) 808-4544
E: SALES@TOOLKRIB.COM

CALL YOUR LOCAL SALES EXPERT TO ORDER 973.808.4550 | TOOLKRIB.COM



T-SHIRT GIVEAWAY

All purchases from this issue qualify for a free t-shirt with proof of purchase (invoice). Visit CEVPromo.com for details.



QUALIFY TO WIN A TV!

One lucky winner will win a 55-inch TV courtesy of Cutting EdgeVantage. Restrictions apply. See CEVPromo.com for details.



BILZ



Jergens

KENNEDY



Accu-Lube

DYKEM



SCRUBS

Rustlick



LOOK FOR US ON INSTAGRAM
[CUTTING.EDGEVANTAGE](https://www.instagram.com/cutting.edgevantage)